

SCAN EVERYTHING

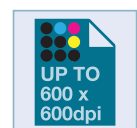
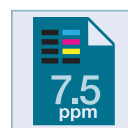
WHEREVER YOU ARE!



The DS-620 makes scanning, sharing and organising your documents effortless. Powered simply by USB from your laptop the powerful industry leading software takes care of the rest.

Features to optimise your workflow

- 7.5ppm (8 seconds per page)
- USB powered
- Compatible with Windows® and Mac
- Up to 600 x 600 dpi
- Compact dimensions
- Professional software suite included



Compact, stylish and easy to use

Introducing the new stylish, compact DS-620 designed and built to make your life digital, organised and more productive.

The DS-620 has the ability to scan all your documents (including plastic ID cards and receipts) ready to be saved to the cloud. Making them available to view on your mobile device, meaning your data is always with you.



One touch scanning technology

High quality

Compact

USB Powered

Product features:

High quality

- Up to 600 x 600 dpi

Compact

- Compact dimensions - 290.5(W)x52.5(D)x36.7(H)
- Weighing only 400g

Easy to use

- One touch scanning technology
- Powered simply by USB

Compatibility

- The supplied TWAIN driver allows seamless integration into various document management systems

Fast and efficient

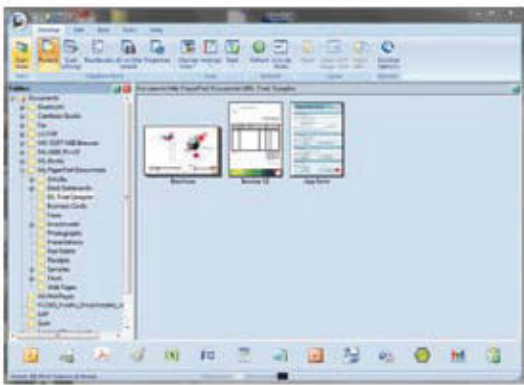
- Scan speed up to 7.5ppm (8 seconds per page) in mono and colour
- Scan to various destinations including: image, e-mail, file, app, printer, shared network folder, OCR, FTP, cloud and SharePoint®
- Scan anything from business cards, plastic ID cards, photographs and receipts up to A4 documents

The bundled suite of software includes:

The DS-620 is bundled with powerful software to become the perfect solution for document management and improved workflow.

Nuance™ PaperPort™ 12SE (Windows®)

Powerful document management, editing and PDF creation program with connector for Microsoft® SharePoint®.



NewSoft® Presto!® PageManager 9 (Mac)

Scan and organise digitised files...View, edit, e-mail or save files as searchable PDF, HTML, RTF, or TXT files.

Button Manager V2 (Windows®)

Configure several scan to options using the direct scan button on the scanner.

NewSoft® Presto!® BizCard 6 (Windows® and Mac)

Scan and export editable contact information directly to Microsoft® Outlook® and other contact management systems.

DSmobileCapture (Windows® and Mac)

A utility to capture and view scanned documents from your mobile scanner.

Maximise your productivity whilst on the move



DS-620 Specification

GENERAL

Image Sensor	CIS (Contact Image Sensor)
Paper Sensor	Electro-Mechanical
Interface	Hi-Speed USB 2.0

SOFTWARE FOR MAC

DsmobileCapture	Easy to use scan software
NewSoft® Presto® BizCard 6	Global business card management solution
NewSoft® Presto®	
PageManager 9	Document management & sharing program

SCANNING

Standard Mono & Colour	
Scan Speed	7.5 ppm (8 seconds) A4 up to 300dpi
Resolution Optical	Up to 600 x 600 dpi
Resolution Interpolated	1200dpi
Colour Depth	48-bit internal & 24-bit external
Gray Scale	256 levels
Supported File Formats	JPEG, TIFF, & PDF (standard, searchable ¹)
Scan to Destinations	Image, e-mail, file, app, printer, shared network folder, OCR, FTP, cloud and SharePoint ²

PAPER HANDLING

Paper Input	1 sheet
Paper Sizes	Between 55mm - 215.9mm in width & 90mm - 812.8mm in length
Paper Weights	Between 60 g/m ² & 105 g/m ²

SCANNER DRIVER

Windows®	TWAIN & WIA (Windows® 8, Windows® 7, Windows Vista® & Windows® XP)
Macintosh	TWAIN (Mac OS X 10.6.X, 10.7.X, 10.8.X)
Linux	SANE ²

SOFTWARE FOR WINDOWS®

DsmobileCapture	Easy to use scan software
Button Manager V2	One touch scanning to e-mail, File, app, folder, FTP or printer
Nuance™ PaperPort™ 12SE	Scan, share, search and organise documents on your PC
NewSoft® Presto® BizCard 6	Global business card management solution

WEIGHTS & DIMENSIONS

With Carton	352(W)x232(D)x60mm(H) 980g
Without Carton	290.5(W)x52.5(D)x36.7(H) 400g

ENVIRONMENT

Power Requirement	USB bus-power 5V DC
Power Consumption (Scanning)	2.5W
Power Consumption (Ready)	1W
Sound Pressure Level (Active)	50dB



¹Requires software that comes bundled with the machine, ²Downloadable free of charge from <http://solutions.brother.com>

Brother Online

Brother offer various software and services to help improve your business efficiency and workflow. To see how we can help your business please visit: www.brother.co.za



www.brother.co.za
<http://solutions.brother.com>

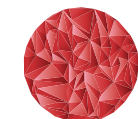
brother
at your side

Brother International South Africa
96 Sovereign Drive, Route 21 Corporate Park, Irene
Tel: +27 (0) 12 - 345 5332 Fax: +27 (0) 12 - 345 3886

All specifications correct at time of printing. Brother is a registered trademark of Brother Industries Ltd. Brand product names are registered trademarks or trademarks of their respective companies.



Working with you for a better environment
www.brotherearth.com



Japanese Excellence
For Over 100 Years